



Polysolar Solar PV Carpark Canopy

'VW' Framework

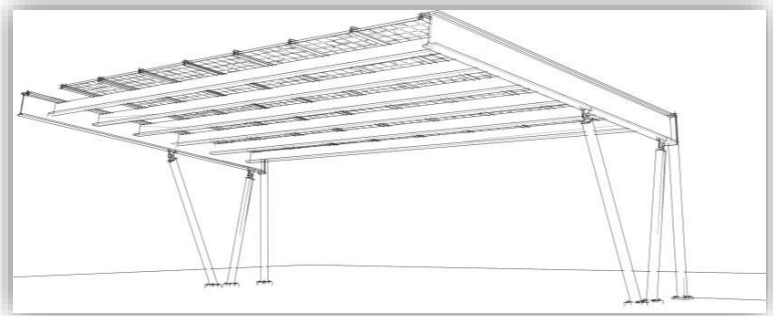
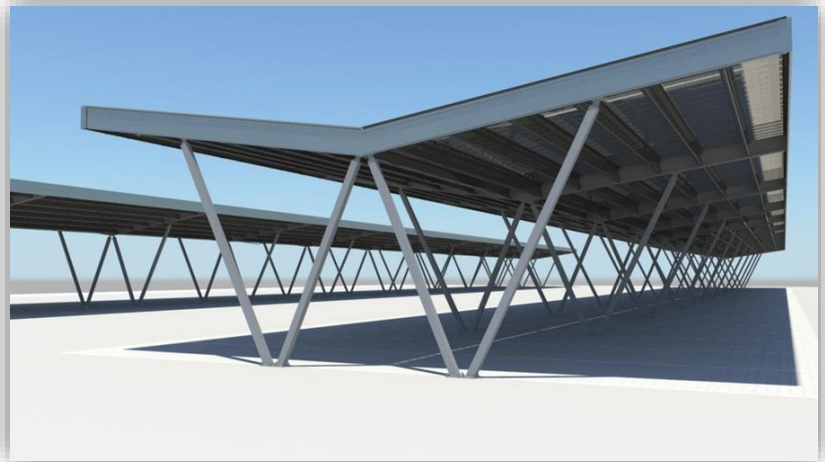
The Duoslope design features a lightweight and cost effective frame with limited footprint between parking bays of less than 1m –avoiding blocking of car doors. Vertical posts are positioned between standard 2.4m carpark bays with a typical 3 bay span.

Vertical posts are all less than the width of bay markings (<0.1m) and so do not reduce bay dimensions and encourage good parking within bay lines.

The double wing cantilever mirrors the single wing cantilever and features up to 6 bays spanned with only two posts. Therefore the Duoslope design is able to deliver our lowest-cost-per watt installation where project financials are the overriding design criteria.

Sites facing east west can benefit from the Duoslope angled roof for longer power generation in the mornings and evenings, matching peak energy demand for the national grid.

All solar carports can include guttering, water management, LED motion controlled lighting, CCTV installation, advertising & branding and EV charging points.



Building Codes

Building Regulations Part A. Structure Specified to Execution Class 2 (EX2) in accordance with BS EN 1090

All structures CE marked according to current requirements.

BE EN 1090—Execution of Steel Structures BS EN 1991-1-1—Actions on structures BS EN 1991-1-3—Snow Loads BS EN 1991-1-4—Wind Loads

BS EN 1991-7—Accidental Actions BS EN 1993-1—Design of Steel Structures BS 8004—Foundations BS 8110-1—Structural Use of concrete

Specifications

Structural

Min height: from 2.2m adjustable Car park dimensions: 2.4m x 4.8m
Roof dimensions 2.4x 5.5m Height and roof pitch as per site requirements

Solar

Rooftop area/space: 12.0m² Solar PV / car parking bay: 2.0kWp

T: 01223911534

www.polysolar.co.uk

E: info@polysolar.co.uk