



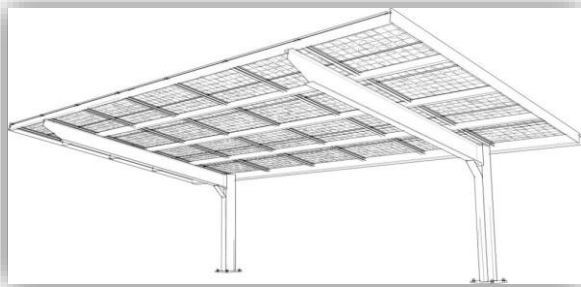
Polysolar Solar PV Carpark Canopy

Cantilever framework

The full cantilever design has the advantage of minimum ground footprint. Vertical posts are positioned between standard 2.4m carpark bays with a typical 3 bay span. The double wing cantilever mirrors the single wing cantilever and features up to 6 bays spanned with only two posts.

The full cantilever design is best suited to payed-for parking where the client will not accept any loss of bays and their associated revenue streams.

All solar carports can include guttering, water management, LED motion controlled lighting, CCTV installation, advertising & branding and EV charging points.



Building Codes

Building Regulations Part A. Structure Specified to Execution Class 2 (EX2) in accordance with BS EN 1090

All structures CE marked according to current requirements.

BE EN 1090—Execution of Steel Structures BS EN 1991-1-1—Actions on structures BS EN 1991-1-3—Snow Loads BS EN 1991-1-4—Wind Loads

BS EN 1991-7—Accidental Actions BS EN 1993-1—Design of Steel Structures BS 8004—Foundations BS 8110-1—Structural Use of concrete

Specifications

Structural

Min height: from 2.2m adjustable Car park dimensions: 2.4m x 4.8m
Roof dimensions 2.4x 5.5m Height and roof pitch as per site requirements

Solar PV

Rooftop area/space: 13.2m² Solar PV / car parking bay: 2.0kWp

T: 01223911534

www.polysolar.co.uk

E: info@polysolar.co.uk